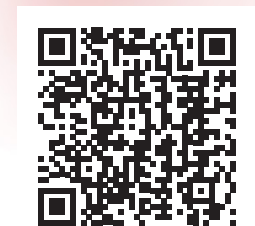
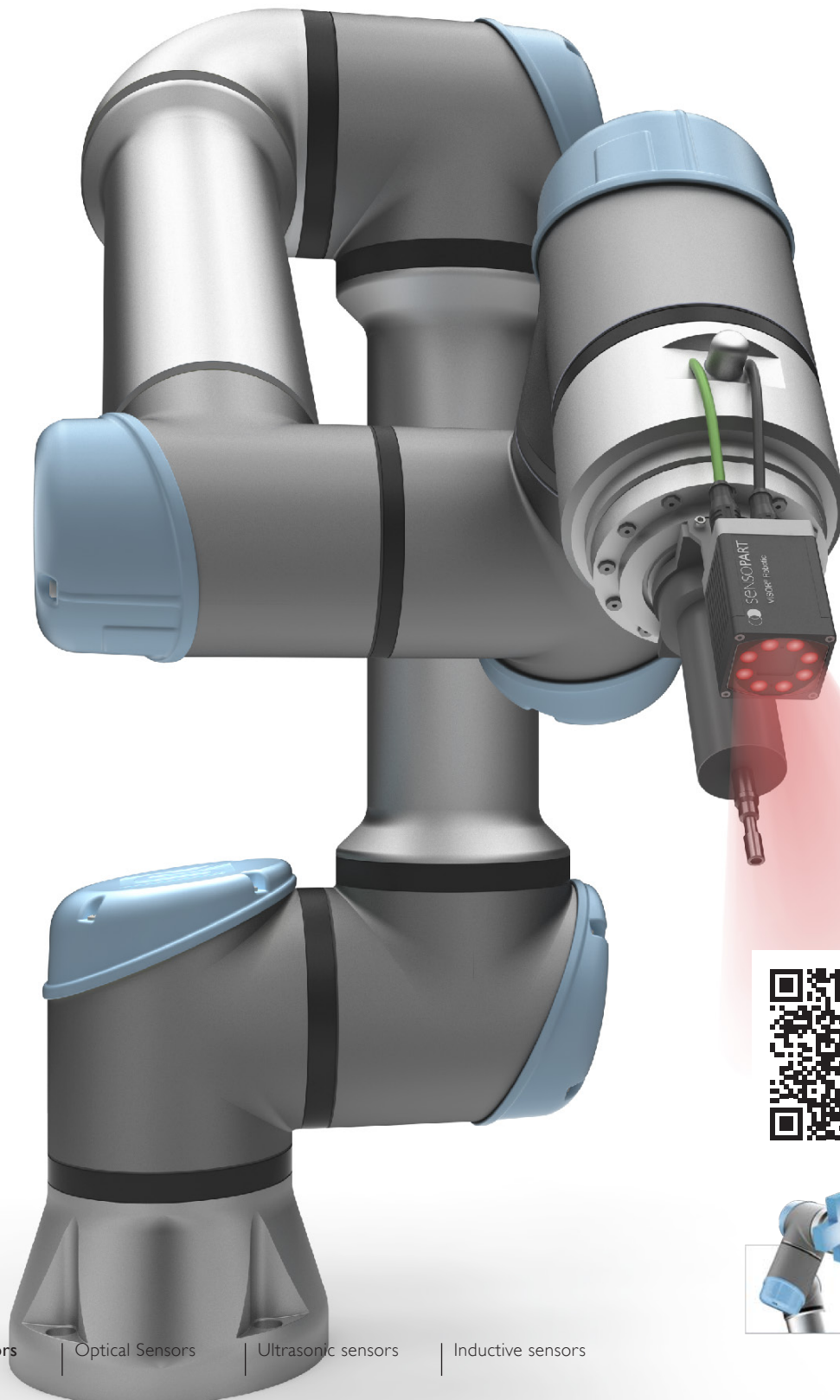


VISOR[®] Robotic URCap

One with the robot. Easy. Quick. Flexible. VISOR[®].



VISOR® Robotic URCap

For a seamless connection of vision sensor and robot.



One with the robot. Easy. Quick. Flexible. VISOR®.

Industrial automation is no longer imaginable without robots: Especially collaborative robotic systems (cobots) that are able to work hand-in-hand with human colleagues have become widespread in recent years. Our vision sensor VISOR® Robotic acts as the “eye” of the robot and is active worldwide in applications of vision-guided robotics. The URCap software package connects the VISOR® Robotic directly with the robot systems from Universal Robots. It supports both commissioning and the application, thanks to the seamless communication between both systems.

TYPICAL VISOR® ROBOTIC

- Compact and lightweight housing for mobile or stationary use
- 2D or 3D localization in robot coordinates
- Simplified setup due to 3D gripping point transformation
- Application-specific calibration methods
- Less robot programming when image acquisition positions vary
- High 5-megapixel resolution



MATERIAL HANDLING



ASSEMBLY



MACHINE

The perfect solution

The VISOR® Robotic URCap enables direct data exchange between VISOR® Robotic and the UR robotic systems. It guides through all the steps necessary to set up vision-guided robotics applications and provides prepared program routines for pick-and-place tasks.

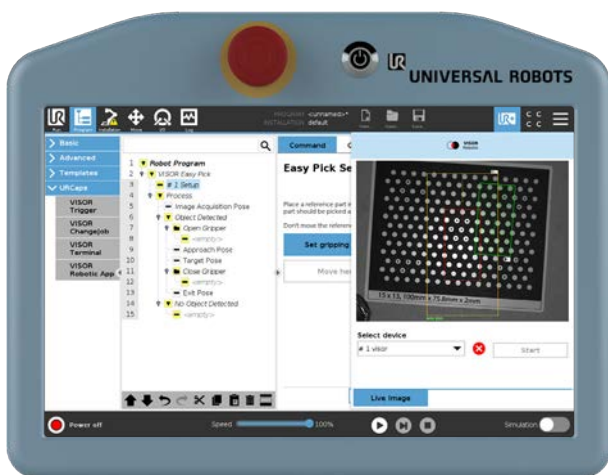
This allows a very quick start into the application and at the same time offers highest flexibility.



How does it work?

The VISOR® Robotic in combination with the URCap offers a flexible, fast and robust solution for 2D vision guided robotics. A new program is set up in less than 15 minutes, thanks to:

- Simple VISOR® configuration
- Step-by-step guide to camera calibration in the URCap software package
- Guided commissioning when setting up Pick and Place applications
- QR codes that link to tutorial videos for each step



VISOR® Robotic URCap highlights

- Find all sensors in the network with one click
- Operate up to 8 VISOR® Robotics in parallel
- Live image from the vision sensor showing the part position
- Support from SensoPart's „assisted calibration process“ (ACP)
- Backup functions and QuickStart jobsets



TENDING



FEEDING



QUALITY INSPECTION

SensoPart is one of the leading manufacturers of photoelectric sensors and image processing vision sensors for factory automation. We also offer inductive and ultrasonic sensors, thereby covering a wide spectrum of industrial automation tasks. Our products are used in countless applications and sectors today – from automotive construction and mechanical engineering to electronics manufacturing and the solar industry, as well as the food sector and pharmaceutical industry.



SensoPart worldwide

Germany

SensoPart
Industriesensorik GmbH
Nägelseestraße 16
79288 Gottenheim
Phone +49 7665 94769-0
info@sensopart.de

France

SensoPart France Sarl
662, rue des Jonchées – Bât. A
F-69730 GENAY
Phone +33 164 730061
info@sensopart.fr

United Kingdom

SensoPart UK Limited
Pera Business Park, Nottingham Road
Melton Mowbray, Leicestershire
LE13 0PB
Phone +44 1664 561539
info@sensopart.co.uk

Austria

SensoPart Österreich GmbH
Gierstergasse 6
1120 Vienna
Tel. +43 1 32100140
info@sensopart.at

USA

SensoPart Inc.
30600 Telegraph Rd.
Suite 2345,
Bingham Farms, MI, 48025
Phone +1 866 2827610
info.usa@sensopart.com

China

SensoPart China
202, No. 35, Lane 1555
West Jinshajiang Road,
Jiading District
201803 Shanghai
Phone +86 21 69017660
china@sensopart.cn

Korea

SensoPart Korea
Geumgang Penterium IX Tower B 235&236,
27, Dongtancheomdansaneop 1-ro,
Hwaseong-si, Gyeonggi-do, Korea
Phone +82 31 723 0135
m.kim@sensopart.com

Find your local supplier at: www.sensopart.com/en/contact/