

SENSOR MASTER INTERFACE

Swiss based Trafag is a leading international supplier of high quality sensors and monitoring instruments for measurement of pressure and temperature. The Sensor Master Interface SMI is used to set parameters of electronic pressure switches such as switching points, output function and switching delay time as well as to adjust the measuring range of submersible pressure transmitters. By reading the device data, the connected pressure measurement device can be precisely identified and the parameters can be checked.



Applications

- Supports device types NAT 8252, NAH 8254, NAR 8258, ECL 8439

Features

- Read out of sensor data
- Parameterization of switching points on NAX pressure switches
- Measuring range adjustment on submersible pressure transmitter ECL
- Fast and easy operation via Android App "Sensor Master Communicator SMC"
- Reset pressure measurement instruments to factory settings

Technical Data

Ambient temperature	0°C ... +40°C	Dimensions	LxWxH: 120x76x27 mm
Supply voltage	5 VDC, ±0.25, 1 A (Supply via USB interface)	Communication SMC/SMI	via Bluetooth LE
Protection	IP20	Operation Interface	via Android App "Sensor Master Communicator SMC"
Storage temperature	-10°C ... +50°C		

06/2018

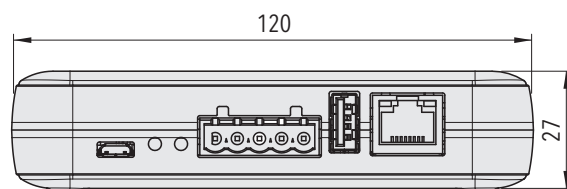
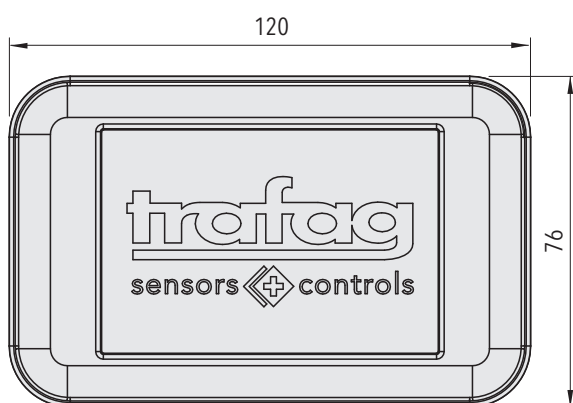
Data sheet H72618b

Subject to change

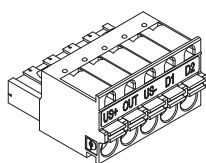
Ordering information

		Ordering no.	
SMI Packet containing:		F90170	
SMI			
USB Bluetooth Dongle (Trafag)	F90172		(Spare part)
Device connector SMI (5-pole, push-in)	F90171		(Spare part)
Cable USB 2.0 A male, Micro-B 1.0 m	F90173		(Spare part)
Accessories			
Cable PVC, M12x1 connector	F90174		
Device connector SMI with housing (5-pole)	F90175		
Case for SMI and accessories (325x248x50 mm)	H30782		

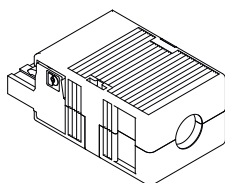
Dimensions



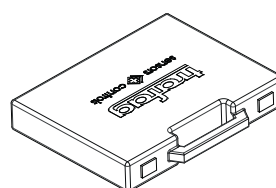
Accessories



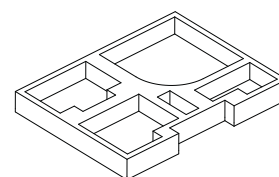
F90171



F90175



H30782



Additional information

Documents

Data sheet	www.trafag.com/H72618
Instructions	www.trafag.com/H73618
Flyer	www.trafag.com/H70602